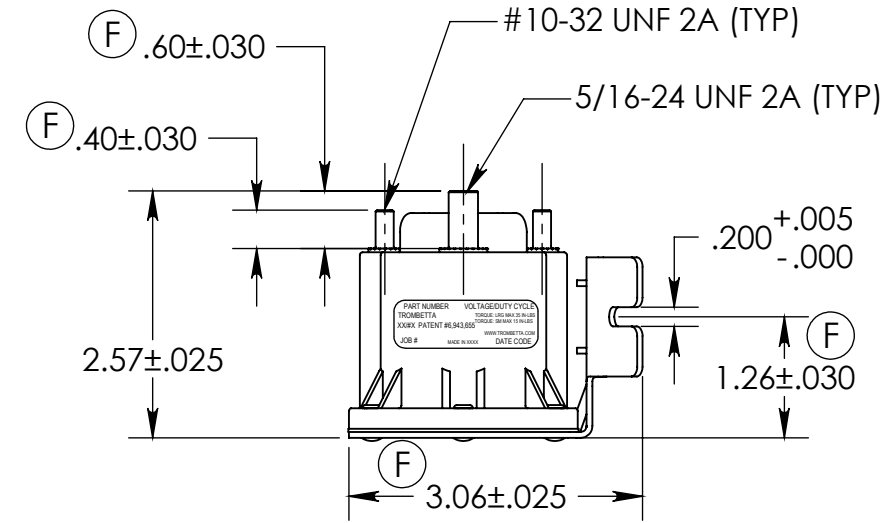
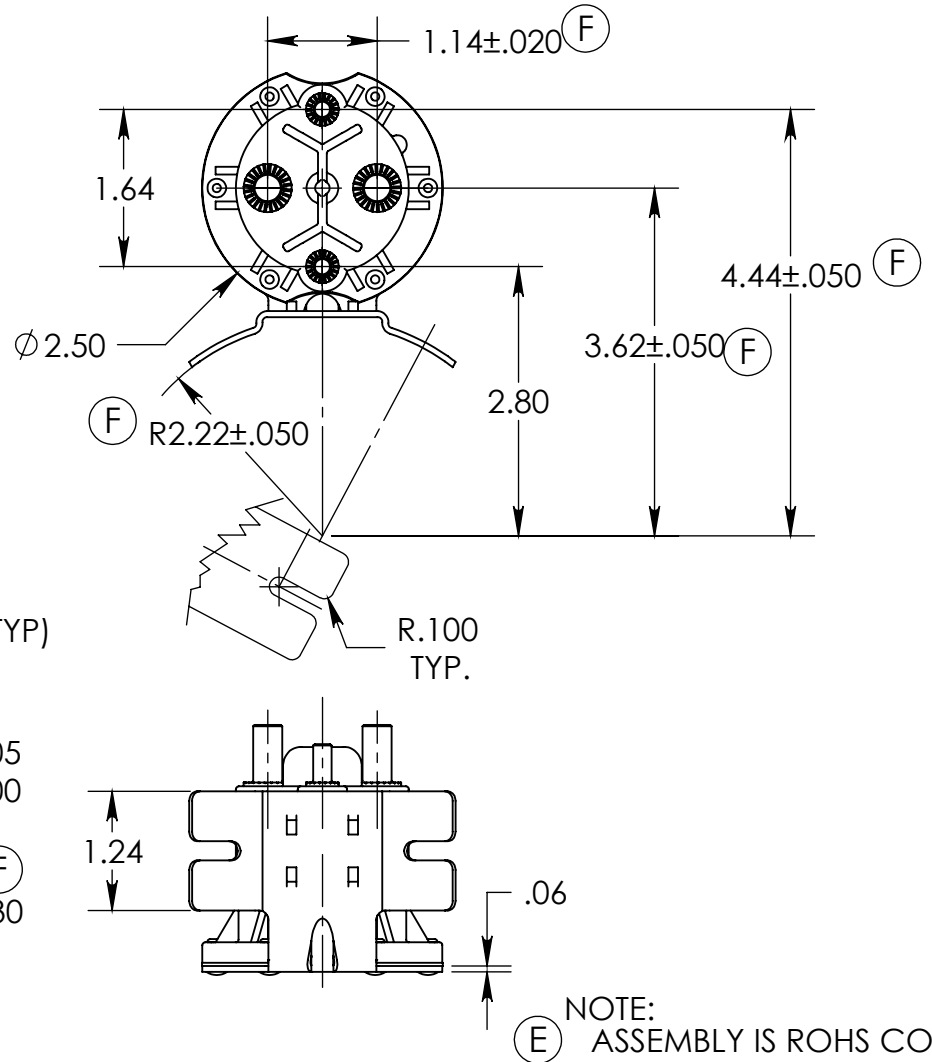


THIS DRAWING IS PROPRIETARY AND CONFIDENTIAL PROPERTY OF TROMBETTA AND IS LOANED IN CONFIDENCE WITH THE UNDERSTANDING THAT IT WILL BE KEPT CONFIDENTIAL AND USED ONLY FOR THE PURPOSE FOR WHICH IT IS LOANED.




REV.	DESCRIPTION	BY	ECN	DATE	APP.
F	ADDED ±.050 TOLERANCE TO 3.62, 4.44 & R2.22 ADDED ±.030 TOLERANCE TO .126, .040 & .060, ADDED .020 TO 1.14, ADDED .025 TO 3.06, REMOVED 28° TYP., R.10, .15 & .38.	CAG	6158	1/8/10	DAH
E	ADDED ROHS NOTE	CAG	6078	7/27/09	DAH
D	ADDED TOLERANCE TO HEIGHT DIMENSION	CAG	4771	10/24/06	DAH
C	ADDED PATENT # TO LABEL	CAG	4642	10/18/05	DAH

MATERIAL

FINISH

UNLESS OTHERWISE SPECIFIED
 .XXX +/- .005 .XX +/- .01 ANG. +/- 1°
 BREAK ALL EDGES .005-.015 125 FINISH
 FILLETS .010-.020 RAD.

Trombetta 
 MOTION TECHNOLOGIES

684-XX61 SERIES
 DIMENSIONAL ASSEMBLY

DRAWN TM	SCALE: 1:2	DWG. NO.
APPR. TM	DATE 12/3/03	E08516