

sockets and plugs

„Increase your efficiency
at the twist of a wrist.“



- ▶ secure connection
- ▶ high current carrying capacity
- ▶ minimum wear
- ▶ compatibility with earlier series

DINSE – the original connector.



Precise cone contact – for safe, sustained welding.

When performing stationary or mobile welding, every movement of the hand counts. This is where the original DINSE connector proves its value. Just plug it together, tighten with a quick twist of the wrist and the connection is perfect. DINSE connectors and sockets are simple, safe, rugged and long-lasting and they provide optimal supply of current.

Cable Sockets

Mini	Part Number	for	Mini	Part Number
DIX BKM 25	121100020	16 - 25 mm ² #8 - #4	DIX SKM 25	122100020

Standard	Part Number	for	Standard	Part Number
DIX BK 25	121100025	16 - 25 mm ² #6 - #4	DIX SK 25	122100025
DIX BK 50	121100050	35 - 50 mm ² #2 - #1	DIX SK 50	122100050
DIX BK 70	121100070	50 - 70 mm ² #1 - 2/0	DIX SK 70	122100070

Plus (with double clamp screws)	Part Number	for	Plus	Part Number
DIX BKK 70	121110070	50 - 70 mm ² #1 - 2/0	DIX SKK 70	122110070
DIX BKK 95	121110090	70 - 95 mm ² 2/0 - 3/0	DIX SKK 95	122110090

Special (with double clamp screws)	Part Number	for	Special	Part Number
DIX BKS 95	121120090	70 - 95 mm ² 2/0 - 3/0	DIX SKS 95	122120090
DIX BKS 120	121120120	95 - 120 mm ² 3/0 - 4/0	DIX SKS 120	122120120

Cable Plugs

Efficient connection system – for installing on electrical devices.



The use of high-performance electrical devices requires maximum availability and long-term durability. DINSE panel mounted plugs and sockets guarantee maximum current carrying capacity thanks to their high precision conical contact. The optimum current transfer minimizes wear and the perfect compatibility increases the cost-effectiveness.

Panel Sockets

Mini	Part Number	connecting screw size	Mini	Part Number
DIX BEM 25	121300020	M 8	DIX SEM 25	122300020

Standard	Part Number	connecting screw size	Standard	Part Number
DIX BE 50/70	121300050	M 10	DIX SE 50/70	122300050
DIX BE 70/95	121300070	M 12	DIX SE 70/95	122300070

Plus (with cover flap)	Part Number	connecting screw size
DIX BEK 50/70	121330050	M 10
DIX BEK 70/95	121330070	M 12

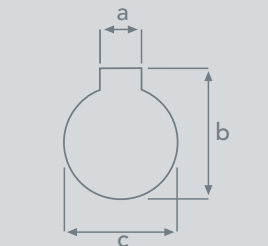
Special	Part Number	connecting screw size	Special	Part Number
DIX BES 95/120	121300120	M 16	DIX SES 95/120	122320120

Panel Plugs

fitting dimensions (in mm)

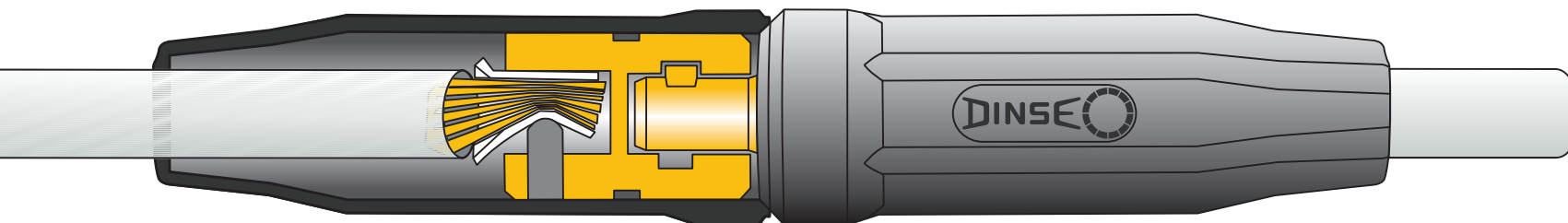
a	b	c
6,3	22,7	20,2

a	b	c
6,3	33,2	30,2
6,3	33,2	30,2



a	b	c
6,3	33,2	30,2
6,3	33,2	30,2

a	b	c
6,3	38,2	35,2



The original DINSE connector

Around the world, the DINSE brand stands for precision, high quality and current carrying capacity. The tried and tested basic components of DINSE cable connectors have decisively contributed to trouble-free welding operations for more than 50 years.

Maximum current-carrying capacity

Thanks to their high-precision conical fit, original DINSE plugs and sockets can carry at least as much load as the connectable welding cables. The following empirical values apply to the maximum load-bearing capacity*. When different sizes of sockets or plugs are used, DINSE reducers create a perfect connection.

nominal cross-section	AWG	100% DC	60% DC
10 - 16 mm ²	#8 - #6	135 A	140 A
16 - 25 mm ²	#6 - #4	180 A	190 A
25 - 35 mm ²	#4 - #2	225 A	245 A
35 - 50 mm ²	#2 - #1	285 A	315 A
50 - 70 mm ²	#1 - 2/0	355 A	400 A
70 - 95 mm ²	2/0 - 3/0	430 A	500 A
95-120 mm ²	3/0 - 4/0	500 A	590 A

* Only for copper cables with high-grade chloroprene covers, e.g.: H01N2-D (permitted up to 80°). For simple rubber hose lines the maximum values are lower.

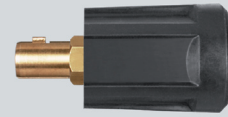
Optimal welding cable

The welding cables** should be selected with sufficiently large cable cross-sections. When the cross-sections are too small, a large part of the power is consumed by the high cable resistance. Recommended copper welding cable wire size – mm² [AWG] – for welding current and cable length.

current	≤10m/30ft	>10m/30ft	>50m/160ft	>100m/330ft
100 A	25 mm ² [#4]	35 mm ² [#2]	50 mm ² [#1]	70 mm ² [2/0]
200 A	35 mm ² [#2]	50 mm ² [#1]	70 mm ² [2/0]	95 mm ² [3/0]
300 A	50 mm ² [#1]	70 mm ² [2/0]	95 mm ² [3/0]	120 mm ² [4/0]
400 A	70 mm ² [2/0]	95 mm ² [3/0]	120 mm ² [4/0]	–
500 A	95 mm ² [3/0]	120 mm ² [4/0]	–	–
600 A	120 mm ² [4/0]	–	–	–

** When aluminium welding cables are used, the next larger size cable cross-section must always be selected due to the poor conductivity, e.g.: Instead of 70 mm² Cu, use 90 mm² Al.

Accessories 03/2012: Technical and/or cosmetic changes reserved

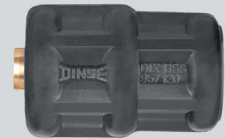


Reduction Plug DIX RSS 50/25 P/N*: 124305025

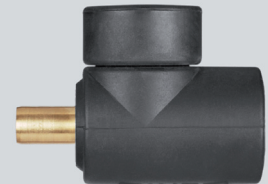
* P/N: Part Number



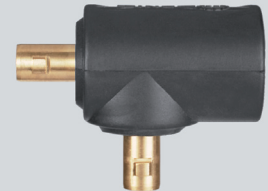
Reduction Plug RSS S50/B25 P/N: 124325025



Reduction Plug DIX RSS 95/120 P/N: 124300000



Cable Joint Socket DIX KAB 70/95 P/N: 123100070



Cable Joint Plug DIX KAS 70/95 P/N: 123200070

