

## Single-acting light-alloy cylinders

with spring return



6 - 140 t  
20 - 200 mm  
500 / 700 bar

View product: <http://industrial.lukas.com>

### Light, high-strength partners for lifting.

At LUKAS, you get a unique and comprehensive range of high-performance light-alloy cylinders. They are corrosion-protected and easier to transport and handle.

Thanks to their low weight and uncompromising quality, LUKAS light-alloy cylinders are the right helpers if you need to move loads on construction sites or in workshops reliably, precisely and safely.

### Facts:

- Wide range of light and economical cylinders
- Single-acting cylinders with strong return spring for fast retraction
- Especially light due to aluminium construction
- Significantly increased safety in 500-bar system
- Longer service life for all components (at 500 bar)

### Guaranteed fit for your system

Whenever you need to lift or move the heaviest loads, the light-alloy cylinders demonstrate one of their greatest strengths: flexibility. With their wide range of configurations, the right cylinder is sure to be waiting for you - and if it isn't, we can custom manufacture one tailored to your needs.



## Single-acting light-alloy cylinders

---

with spring return

### Benefits:

- In 500-bar series with quick-release coupler with integrated safe quick-stop system
- In 700-bar series with internationally typical screw couplers
- High lateral load tolerance
- Scraper ring for reduced wear
- Full-load stroke limit

### Especially safe connections for especially safe work

Only LUKAS offers a complete system for an operating pressure of 500 bar. Why? Because we think about your safety! With the [quick release](#), connections are faster and safer. And the [quick stop](#), unique worldwide, protects you against unintended lowering of the load while the lower maximum pressure results in extended service life for all components.

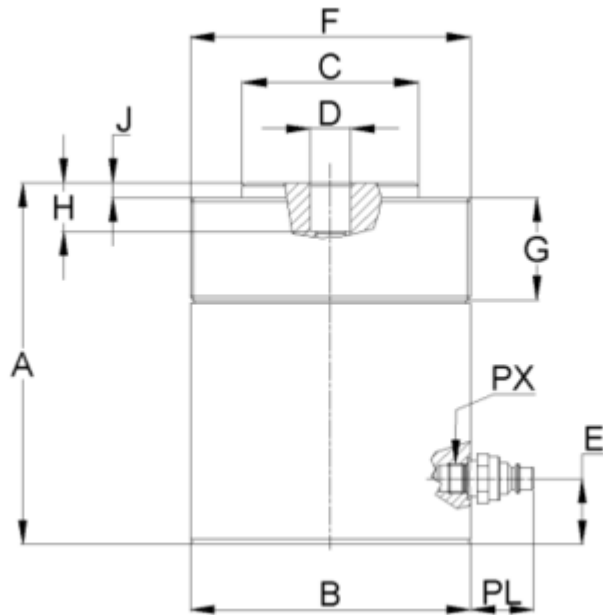
### In use:

- Lifting, pushing, shifting and pressing
- Loads up to 140 tonnes
- up to 200 mm total stroke
- Construction sites, workshops and numerous other locations

## Single-acting light-alloy cylinders

with spring return

500 Bar with thread



## Single-acting light-alloy cylinders

with spring return

### 500 Bar with thread

type (type)	order no.	lifting cap. (kN)	stroke (mm)	effective area (cm <sup>2</sup> )	required oil cap. (l)	A (mm)	B (Ø mm)	C (Ø mm)	D (Ø mm)	E (mm)	F (Ø mm)	G (mm)	H (mm)	J (mm)	PX	PL (mm)	weight (kg)
<b>LFO 6/20*</b>	85144/1704	63	20	12.6	0.03	65	56	32	16	21	--	--	--	1	M 18x1.5	66	0.9
<b>LFM 6/50</b>	85145/1808	63	50	12.6	0.06	160	58	32	16	23	M 55x2	42	16	5	M 18x1.5	44	1.4
<b>LFM 6/100</b>	85145/1811	63	100	12.6	0.13	210	58	32	16	23	M 55x2	42	20	5	M 18x1.5	44	2
<b>LFM 6/160</b>	85145/1813	63	160	12.6	0.2	270	58	32	16	23	M 55x2	42	20	5	M 18x1.5	44	2.5
<b>LFM 10/50</b>	85145/2208	98	50	19.6	0.1	186	70	40	16	23	M 68x2	50	29	6	M 18x1.5	44	2.7
<b>LFM 10/100</b>	85145/2210	98	100	19.6	0.2	236	70	40	16	23	M 68x2	50	29	6	M 18x1.5	44	3.4
<b>LFM 10/160</b>	85145/2213	98	160	19.6	0.31	296	70	40	16	23	M 68x2	50	29	6	M 18x1.5	44	4.2
<b>LFM 16/50</b>	85145/2608	156	50	31.2	0.16	205	85	50	25	40	M 85x2	60	30	7	M 18x1.5	44	5.2
<b>LFM 16/100</b>	85145/2611	156	100	31.2	0.31	255	85	50	25	40	M 85x2	60	30	7	M 18x1.5	44	5.5
<b>LFM 16/160</b>	85145/2613	156	160	31.2	0.5	315	85	50	25	40	M 85x2	60	30	7	M 18x1.5	44	6.4
<b>LFM 25/25**</b>	85145/3005	251	25	50.3	0.15	101	110	63	25	21	M 110x3	55	25	1	M 18x1.5	44	6.7
<b>LFM 25/50</b>	85145/3008	251	50	50.3	0.25	215	127	63	25	40	M 120x3	70.5	30	7	M 18x1.5	44	9
<b>LFM 25/100</b>	85145/3011	251	100	50.3	0.5	265	127	63	25	40	M 120x3	70.5	30	7	M 18x1.5	44	11
<b>LFM 25/150</b>	85145/3013	251	150	50.3	0.75	315	127	63	25	40	M 120x3	70.5	30	7	M 18x1.5	44	13.5
<b>LFM 25/200</b>	85145/3014	251	200	50.3	1.01	365	127	63	25	40	M 120x3	70.5	30	7	M 18x1.5	44	15



## Single-acting light-alloy cylinders

with spring return

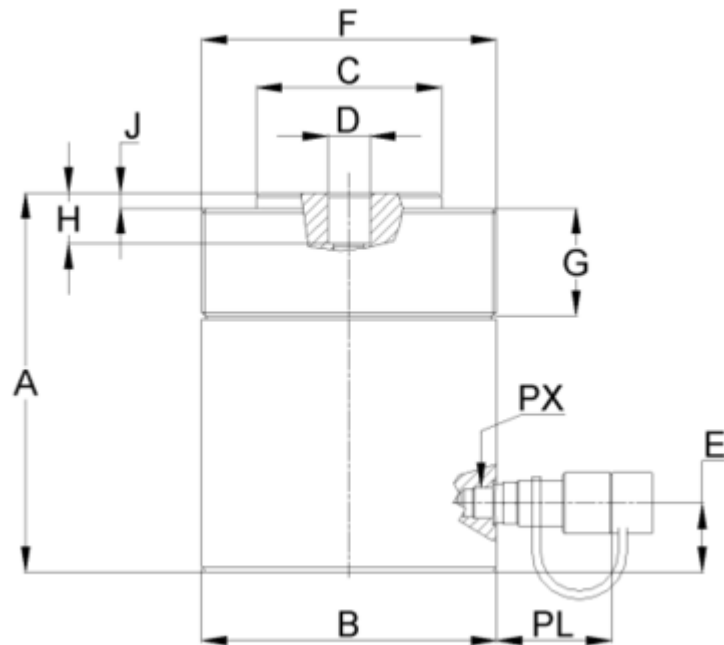
type (type)	order no.	lifting cap. (kN)	stroke (mm)	effective area (cm <sup>2</sup> )	required oil cap. (l)	A (mm)	B (Ø mm)	C (Ø mm)	D (Ø mm)	E (mm)	F (Ø mm)	G (mm)	H (mm)	J (mm)	PX	PL (mm)	weight (kg)
<b>LFM 40/50</b>	85145/3408	393	50	78.5	0.39	224	146	90	25	30	M 140x3	70.5	30	9	M 18x1.5	44	11
<b>LFM 40/100</b>	85145/3411	393	100	78.5	0.79	274	146	90	25	30	M 140x3	70.5	30	9	M 18x1.5	44	13.3
<b>LFM 40/150</b>	85145/3413	393	150	78.5	1.18	324	146	90	25	30	M 140x3	70.5	30	9	M 18x1.5	44	15.5
<b>LFM 40/200</b>	85145/3414	393	200	78.5	1.57	374	146	90	25	30	M 140x3	70.5	30	9	M 18x1.5	44	17
<b>LFM 63/50</b>	85145/3808	614	50	122.7	0.61	225	175	110	25	41	M 170x3	70.5	30	9	M 18x1.5	44	15.5
<b>LFM 63/100</b>	85145/3811	614	100	122.7	1.23	281	175	110	25	41	M 170x3	70.5	30	9	M 18x1.5	44	19.8
<b>LFM 63/160</b>	85145/3813	614	160	122.7	1.96	341	175	110	25	41	M 170x3	70.5	30	9	M 18x1.5	44	22.5
<b>LFM 63/200</b>	85145/3814	614	200	122.7	2.45	384	175	110	25	41	M 170x3	70.5	30	9	M 18x1.5	44	25
<b>LFO 100/32***</b>	85144/4106	1005	32	201	0.65	125	220	140	40	25	--	--	--	--	M 18x1.5	44	35
<b>LFM 100/50</b>	85145/4208	1005	50	201	1.01	265	220	140	40	55	M 220x4	70	30	9	M 18x1.5	44	29.5
<b>LFM 100/100</b>	85145/4211	1005	100	201	2.11	315	220	140	40	55	M 220x4	70	30	9	M 18x1.5	44	36.1
<b>LFM 100/150</b>	85145/4213	1005	150	201	3.12	365	220	140	40	55	M 220x4	70	30	9	M 18x1.5	44	38.8
<b>LFM 100/200</b>	85145/4214	1005	200	201	4.02	415	220	140	40	55	M 220x4	70	30	9	M 18x1.5	44	44

\*without external thread \*\*without spring return \*\*\*without spring return, without external thread

## Single-acting light-alloy cylinders

with spring return

**700 Bar with thread**





## Single-acting light-alloy cylinders

with spring return

### 700 Bar with thread

type (type)	order no.	lifting cap. (kN)	stroke (mm)	effective area (cm <sup>2</sup> )	required oil cap. (l)	A (mm)	B (Ø mm)	C (Ø mm)	D (Ø mm)	E (mm)	F (Ø mm)	G (mm)	H (mm)	J (mm)	PX	PL (mm)	weight (kg)
<b>HLO 9/20 M</b>	83144/1704	88	20	12.6	0.03	65	56	32	16	21	--	--	--	1	M 18x1.5	66	0.9
<b>HLM 9/50 M</b>	83145/1808	88	50	12.6	0.06	160	58	32	16	23	M 55x2	42	16	5	M 18x1.5	72	1.4
<b>HLM 9/100 M</b>	83145/1811	88	100	12.6	0.13	210	58	32	16	23	M 55x2	42	20	5	M 18x1.5	72	2
<b>HLM 9/160 M</b>	83145/1813	88	160	12.6	0.2	270	58	32	16	23	M 55x2	42	20	5	M 18x1.5	72	2.5
<b>HLM 14/50 M</b>	83145/2208	137	50	19.6	0.1	186	70	40	16	23	M 68x2	50	29	6	M 18x1.5	72	2.7
<b>HLM 14/100 M</b>	83145/2210	137	100	19.6	0.2	236	70	40	16	23	M 68x2	50	29	6	M 18x1.5	72	3.4
<b>HLM 14/160 M</b>	83145/2213	137	160	19.6	0.31	296	70	40	16	23	M 68x2	50	29	6	M 18x1.5	72	4.2
<b>HLM 22/50 M</b>	83145/2608	218	50	31.2	0.16	205	85	50	25	40	M 85x2	60	30	7	M 18x1.5	72	5.2
<b>HLM 22/100 M</b>	83145/2611	218	100	31.2	0.31	255	85	50	25	40	M 85x2	60	30	7	M 18x1.5	72	5.5
<b>HLM 22/160 M</b>	83145/2613	218	160	31.2	0.5	315	85	50	25	40	M 85x2	60	30	7	M 18x1.5	72	6.4
<b>HLM 35/50 M</b>	83145/3008	352	50	50.3	0.25	215	127	63	25	40	M 120x3	70.5	30	7	M 18x1.5	72	9
<b>HLM 35/100 M</b>	83145/3011	352	100	50.3	0.5	265	127	63	25	40	M 120x3	70.5	30	7	M 18x1.5	72	11
<b>HLM 35/150 M</b>	83145/3013	352	150	50.3	0.75	315	127	63	25	40	M 120x3	70.5	30	7	M 18x1.5	72	13.5
<b>HLM 35/200 M</b>	83145/3014	352	200	50.3	1.01	365	127	63	25	40	M 120x3	70.5	30	7	M 18x1.5	72	15
<b>HLM 55/50 M</b>	83145/3408	550	50	78.5	0.39	224	146	90	25	30	M 140x3	70.5	30	9	M 18x1.5	72	11



## Single-acting light-alloy cylinders

with spring return

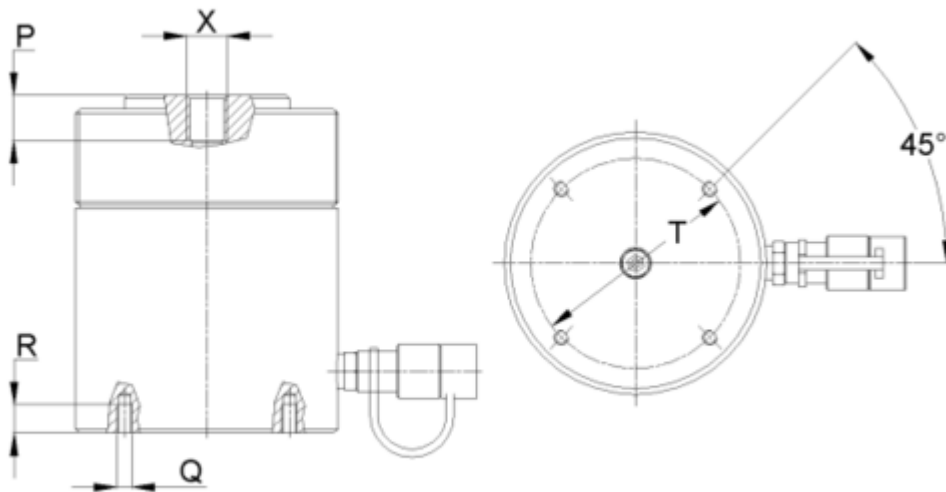
type (type)	order no.	lifting cap. (kN)	stroke (mm)	effective area (cm <sup>2</sup> )	required oil cap. (l)	A (mm)	B (∅ mm)	C (∅ mm)	D (∅ mm)	E (mm)	F (∅ mm)	G (mm)	H (mm)	J (mm)	PX	PL (mm)	weight (kg)
<b>HLM 55/100 M</b>	83145/3411	550	100	78.5	0.79	274	146	90	25	30	M 140x3	70.5	30	9	M 18x1.5	72	13.3
<b>HLM 55/150 M</b>	83145/3413	550	150	78.5	1.18	324	146	90	25	30	M 140x3	70.5	30	9	M 18x1.5	72	15.5
<b>HLM 55/200 M</b>	83145/3414	550	200	78.5	1.57	374	146	90	25	30	M 140x3	70.5	30	9	M 18x1.5	72	17
<b>HLM 85/50 M</b>	83145/3808	859	50	122.7	0.61	225	175	110	25	41	M 170x3	70.5	30	9	M 18x1.5	72	15.5
<b>HLM 85/100 M</b>	83145/3811	859	100	122.7	1.23	281	175	110	25	41	M 170x3	70.5	30	9	M 18x1.5	72	19.8
<b>HLM 85/160 M</b>	83145/3813	859	160	122.7	1.96	341	175	110	25	41	M 170x3	70.5	30	9	M 18x1.5	72	22.5
<b>HLM 85/200 M</b>	83145/3814	859	200	122.7	2.45	384	175	110	25	41	M 170x3	70.5	30	9	M 18x1.5	72	25
<b>HLM 140/50 M</b>	83145/4208	1407	50	201	1.01	265	220	140	40	55	M 220x4	70	30	9	M 18x1.5	72	29.5
<b>HLM 140/100 M</b>	83145/4211	1407	100	201	2.11	315	220	140	40	55	M 220x4	70	30	9	M 18x1.5	72	36.1
<b>HLM 140/150 M</b>	83145/4213	1407	150	201	3.12	365	220	140	40	55	M 220x4	70	30	9	M 18x1.5	72	38.8
<b>HLM 140/200 M</b>	83145/4214	1407	200	201	4.02	415	220	140	40	55	M 220x4	70	30	9	M 18x1.5	72	44



## Single-acting light-alloy cylinders

with spring return

### Befestigungsbohrungen



 **Single-acting light-alloy cylinders**

with spring return

**Befestigungsbohrungen**

type (type)	D	H (mm)	X (mm)	P (mm)	Q	R (mm)	S (mm)	T (mm)
<b>LFM 6/20</b>	--	--	M 18x1.5	10	--	--	--	--
<b>LFM 6/..</b>	--	--	M 18x1.5	13.5	M 6	10	--	35
<b>LFM 10/..</b>	--	--	M 18x1.5	22.5	M 6	10	--	50
<b>LFM 16/..</b>	--	--	M 27x2	22.5	M 8	13	--	66
<b>LFM 25/..</b>	--	--	M 27x2	24	M 8	13	--	88
<b>LFM 40/..</b>	--	--	M 27x2	30	M 10	19	--	110
<b>LFM 63/..</b>	--	--	M 27x2	30	M 10	19	--	140
<b>LFM 100/..</b>	--	--	--	--	M 12	24	--	185
<b>HLM 9/20</b>	--	--	M 18x1.5	10	--	--	--	--
<b>HLM 9/..</b>	--	--	M 18x1.5	13.5	M 6	10	--	35
<b>HLM 14/..</b>	--	--	M 18x1.5	22.5	M 6	10	--	50
<b>HLM 22/..</b>	--	--	M 27x2	22.5	M 8	13	--	66
<b>HLM 35/..</b>	--	--	M 27x2	24	M 8	13	--	88
<b>HLM 55/..</b>	--	--	M 27x2	30	M 10	19	--	110
<b>HLM 85/..</b>	--	--	M 27x2	30	M 10	19	--	140

## Single-acting light-alloy cylinders

with spring return

type (type)	D	H (mm)	X (mm)	P (mm)	Q	R (mm)	S (mm)	T (mm)
<b>HLM 140/..</b>	--	--	--	--	M 12	24	--	185



Germany's finest hydraulics

## LUKAS – the name in hydraulic tools.

High-quality hydraulic tools for industrial applications: LUKAS has developed and produced them in Germany since 1948. Wherever you need to move heavy loads, with our products you have a strong partner at your side. Only LUKAS offers these advantages:

### German quality

With few exceptions, LUKAS products are developed and manufactured from start to finish in Germany. That is the only way we can maintain our high standard of quality and monitor our entire production chain. Our highly skilled team works with great attention to detail - and is always a step closer to our customers.



### The original

In 1948, LUKAS was the first brand to offer high-quality hydraulic tools for industrial applications. Since then our engineers have always kept a step ahead of developments so we can offer the guaranteed best quality.

### Unique customer focus

LUKAS is the only manufacturer to offer you customer-oriented direct sales. Our experienced sales team can give you excellent advice because they understand your needs and can offer you tailored solutions.